

Scholarship Feature: The Appleseed Foundation Annual Scholarship

David Dorbad is the first person to receive The Appleseed Foundation Annual Scholarship, which was established to ease the financial burden of an incoming MD1 student from Luzerne County.

Dave grew up in Exeter, PA, graduated from Wyoming Area High School and earned a BS in Biology from Misericordia University. As an undergraduate, David was very involved in leadership activities, volunteering at the Graham Academy, and shadowing physicians and other healthcare providers.

Regarding his path to TCMC, Dave says, "The path toward becoming a physician is worthwhile, yet stressful—emotionally and financially. When I first found out I had been offered The Appleseed Foundation Scholarship, I was elated. The Valley With a Heart continues to fuel my passion and admiration for this community. I am humbled to have been considered and I am truly

thankful for the support."

On behalf of the full Board of Directors of the Appleseed Foundation, Interim Director Gerry O'Donnell states, "Our aim is to improve the quality of life for all throughout the greater Wyoming Valley. We are focused on long term results that are measurable and sustainable. We know that we can have a positive impact on achieving this by helping a student get an education, especially one who has a strong desire to practice medicine in our area one day. By establishing The Appleseed Foundation Annual Scholarship at TCMC, we are part of ensuring that there is affordable, quality health care in the region."

David Dorbad

Class Year:
MD '19

Hometown:
Exeter, PA



To make a donation or for more information, please contact the Office of Annual Giving at 570.504.9619, or visit tcmc.edu/donate.

The Journal

WINTER 2015-2016



WHERE are they now?

A Residency Story



Alexandra Belcher-Obejero-Paz, MD '15

Residency: Boston University Medical Center, Boston, MA

Specialty: Obstetrics & Gynecology

Hometown: Boston, MA

Alexandra Belcher-Obejero-Paz, MD '15, matched at Boston University Medical Center and has quickly transitioned from medical student to resident. Alexandra shares: "Being a resident is difficult, yet exhilarating! There is so much to learn and sometimes the learning curve seems insurmountable. However, every day I come out the other end a little more confident and a little more knowledgeable."

When asked how The Commonwealth Medical College (TCMC) prepared her for residency, Alexandra says: "TCMC provided me with a great deal of patient exposure. Because of my TCMC mentors, I am confident with my physical examination and interviewing skills."

The education Alexandra received has given her the ability to understand that clinical care is complex, just like each patient. She is putting her knowledge to the test. "Most importantly, I feel that

I am constantly thinking about the full picture; that is, what is going on in the patient's life that could be impacting their decision-making process and their health outcomes. This has been important with the patient population I serve at Boston University Medical Center," she adds.

Once Alexandra completes her residency, she will be working for at least four years in an underserved community due to her status as a National Health Service Corps Scholar. She plans to split her time as a laborist and primary care practitioner in women's health.

Alexandra's advice for graduating medical students: "Fourth year is the best year of medical school with lots of anticipation and happy changes. Enjoy every moment and take the time to continue to strengthen friendships. Everything will work out as it should, so try not to sweat the small stuff."

"TCMC provided me with a great deal of patient exposure. Because of my TCMC mentors, I am confident with my physical examination and interviewing skills."

A Message from the President and Dean



The past year has been one of growth for TCMC. We expanded our network of clinical partners, most notably with our fourth campus at Guthrie in Sayre. We welcomed another MD class of over 100 students. And we learned that our economic impact to the region and state—another dimension of community wellbeing—amounts to \$65.2 million annually.

We also officially launched the **Campaign for Scholarships and Innovation**. Our goal is to raise \$15 million, with the priority being student scholarships, and at Gala 2015 we announced that in the silent phase we had already raised over 60% of that—\$9.45 million.

Now, we must turn to essential progress in the areas of curriculum, research, partnerships, community initiatives, and new programs. In every one of these areas we will be focused on **community, wellbeing, and innovation**.

In *curriculum* we will be pushing the envelope of innovation, and strengthening the theme of *community* throughout the four years. All of our *research* at TCMC will be focused on addressing community needs, from cancer to health care quality. Our mission to improve community health can only be realized in collaboration with *community partners*. Our *community initiatives* have already begun to impact our communities, such as the Behavioral Health Initiative, a partnership with the Luzerne Foundation, the Wright Center, Community Care Behavioral Health, and many dozens of agencies and other community partners represented on our large Advisory Committee, which is now up to a membership of over 80 people. We are also actively working on the development of several new *degree programs*, and a *partnership* with Geisinger's Genomics initiative. In the coming months, you will learn of our developing collaboration with the Baruch S. Blumberg Institute and the Pennsylvania Biotechnology Center of Bucks County innovation incubator in Doylestown.

I have been continually amazed by the sense of community, our collective and individual sense of ownership of the College and in particular of our commitment to student success, as embodied in our staff, faculty, and donors. TCMC's focus on wellbeing and push toward innovation are our unique strengths. I am humbled and honored to be a part of this team.

Sincerely,

Steven J. Scheinman, MD
President and Dean

BOARD OF TRUSTEES

- Louis DeNaples, Chair
- Thomas Karam, Vice Chair
- John Graham, Treasurer
- John Moses, Esq., Secretary
- David Hawk
- John J. Menapace
- Edith P. Mitchell, MD, FACP
- Robert W. Naismith, PhD
- Susan F. Sordoni, MD
- Gregory A. Threatte, MD
- Robert Wright, MD
- Steven J. Scheinman, MD, *ex officio*
- Kathleen Doane, PhD, *ex officio*

The Journal

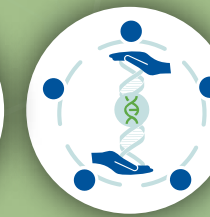
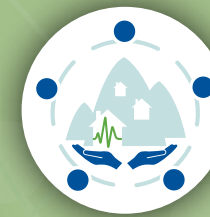
Managing Editor
Heather M. Davis, MFA

Contributors
Chris Carroll
Heather M. Davis, MFA
Ingrid Husisian, MS



ON THE COVER:

To secure TCMC's future as an innovative medical college, the Board of Trustees has approved a \$15 million goal for the Campaign for Scholarships and Innovation (CSI). The CSI will underwrite establishing TCMC as a national model for community medical education and rural medical care. Join Us: campaign.tcmc.edu



COMMUNITY • WELLBEING • INNOVATION

INTRODUCING...

THE CAMPAIGN FOR SCHOLARSHIPS & INNOVATION

“Never doubt that a small group of thoughtful, committed citizens can change the world; indeed, it’s the only thing that ever has.”



This statement, inscribed on a plaque in the entry to TCMC, was dramatically affirmed in northeastern Pennsylvania when a small group of thoughtful and committed citizens first envisioned and then founded The Commonwealth Medical College. A dream at the turn of the 21st century became a reality in 2008. The founding of TCMC has indeed changed medical education and medical care in the communities within our 17-county region of northeastern and north central Pennsylvania.

Today, TCMC is fully accredited and boasts graduating classes with success in passing national board exams and in securing prestigious residency programs. As TCMC prepares for the next stage in its evolution into a nationally-respected medical college, the Board of Trustees has approved a \$15 million fundraising initiative, the Campaign for Scholarships and Innovation (CSI). The three themes for the campaign are Community, Wellbeing, and Innovation, which serve as the foundation for all that has been achieved and all that we will do in the years ahead. These themes will also guide the College as we share our message with the communities we serve and the nation.

TCMC provides a regionally-engaged and nationally-relevant medical education that is distinct and innovative. Our faculty are innovative leaders in medical education, research, and service. Our students represent a different future for health care and wellbeing—one committed to a lifetime of service in our communities.

Please join in supporting TCMC’s quest to be a national model for community-based medical education with a generous gift to the CSI.

COMMUNITY

The grounding of a medical education, research and service organization in 17 counties begins with a commitment to community care and wellbeing. As TCMC evolves in its innovative journey in medical education, research, and service, we will continue to align our commitment with community needs for the greatest impact.

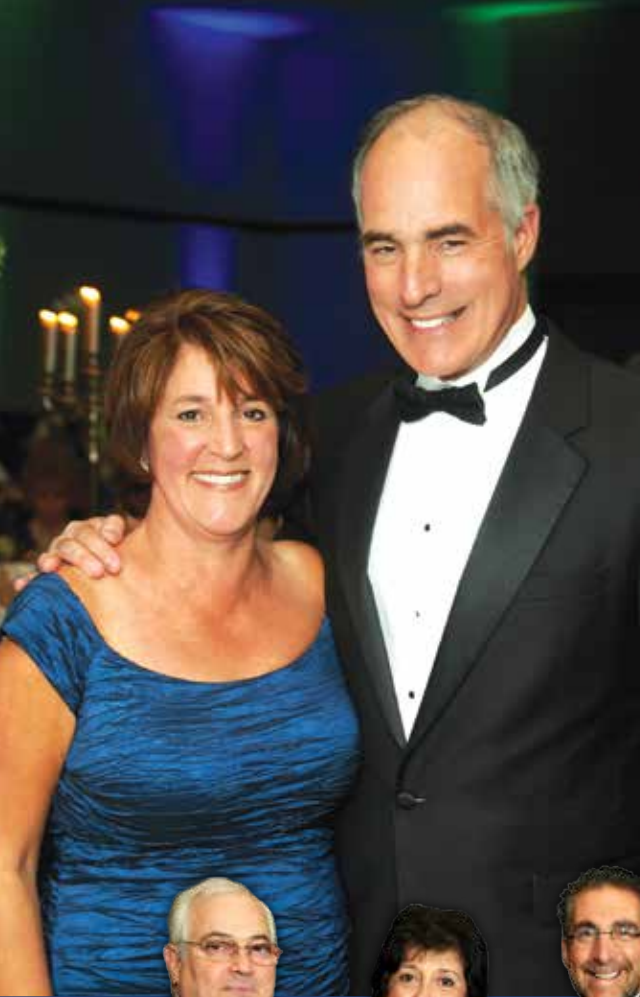
WELLBEING

The founders of TCMC had a grand vision—to transform the health and wellbeing of the citizens of the area. Community health comes first at TCMC. Our medical education begins by addressing the most pressing healthcare needs in our communities. Working cooperatively with local hospitals, we see firsthand the most pressing health challenges, and we are responding.

INNOVATION

We do medical education differently. From the first day of medical school through graduation, our students are engaged with and learn from the people and organizations throughout the communities of the 17 counties we serve. Continuity of experience with patients in our communities is essential to developing the empathetic, dedicated physicians promised by our mission. Our four regional campuses and Family Centered Experience Program ensure that our students receive early clinical experience with local families and physician mentors. We were the first fully accredited medical college in the nation to require every student to participate in a Longitudinal Integrated Clerkship, an innovative approach to medical education. Additionally, Interprofessional Education is central to our curriculum and value system at TCMC.

Learn more about the CSI and TCMC’s commitment to Community, Wellbeing, and Innovation: campaign.tcmc.edu



TCMC *Gala* 2015

BLACK TIES FOR WHITE COATS
The Place to Be and Be Seen

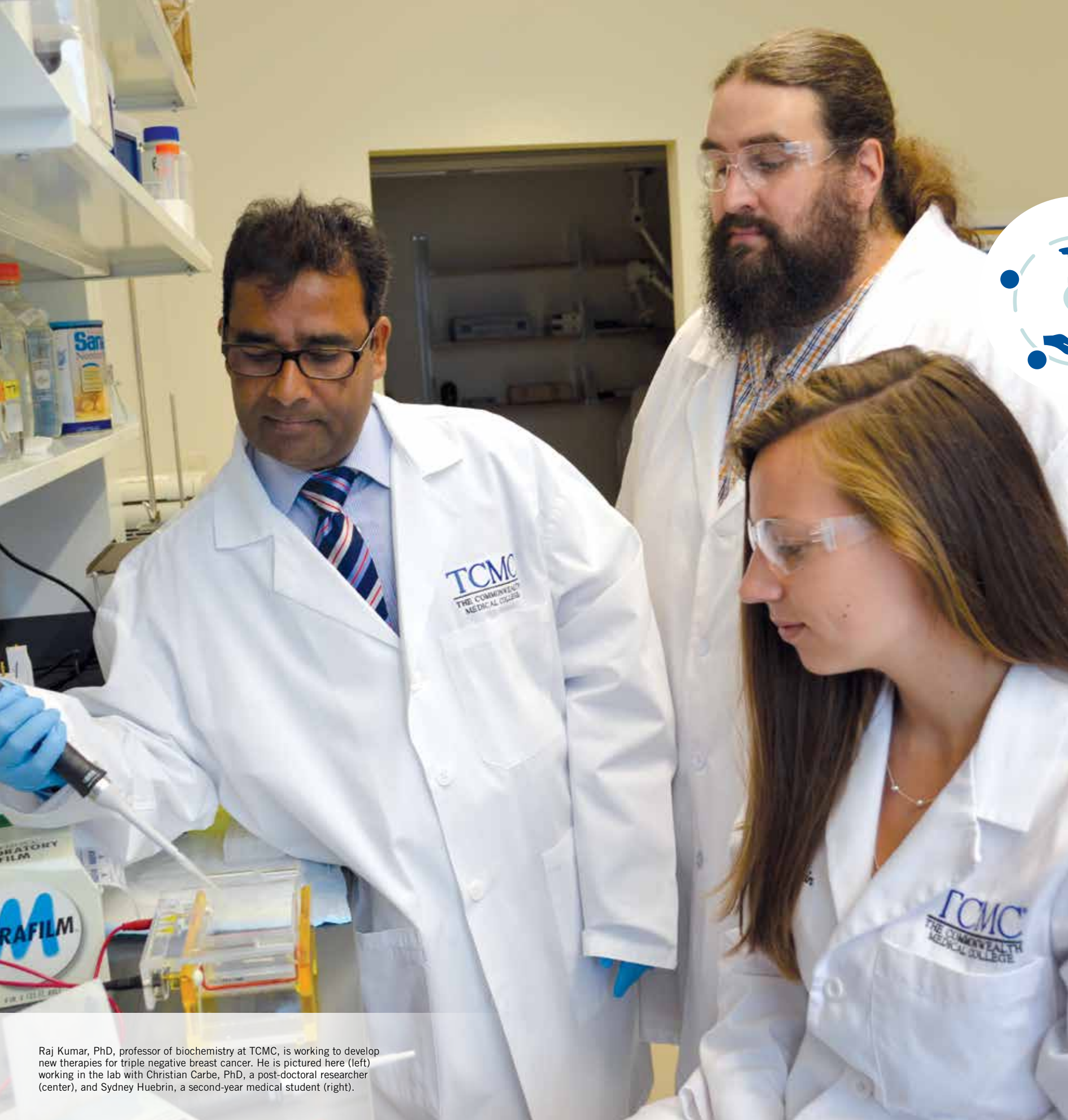
TCMC broke records on October 17, 2015. Nearly 600 guests attended 'Gala 2015: Black Ties for White Coats,' which grossed over \$431,000 in support of student scholarships. Both the attendance and gross total raised are the highest in the event's seven-year run.

The evening marked the unveiling of the public phase of our Campaign for Scholarships and Innovation (CSI). Guests learned how the CSI will expand scholarships for future physicians and sustain growth and innovation as a regionally-focused, nationally-relevant medical college.

Additionally, we saluted six honorees who exemplify three key principles of TCMC's mission: David and Ann Hawk for their commitment to community; Dr. Stanley and Theresa Dudrick for their dedication to wellbeing; and Peter and Sally Bohlin for their lifetime of creativity and innovation.

Look through even more Gala photos and watch the videos featured at the event: tcmc.edu/gala





Raj Kumar, PhD, professor of biochemistry at TCMC, is working to develop new therapies for triple negative breast cancer. He is pictured here (left) working in the lab with Christian Carbe, PhD, a post-doctoral researcher (center), and Sydney Huebrin, a second-year medical student (right).

TCMC PROFESSOR RESEARCHES TREATMENTS FOR

Triple Negative Breast Cancers



INNOVATION

According to the American Cancer Society, mortality rates from breast cancer have been declining for the last 25 years, resulting from early detection and targeted therapies, which are drugs that precisely identify and destroy cancer cells.

Most breast cancers are fueled by estrogen and progesterone hormones, and/or human epidermal growth factor. Scientists have developed targeted therapies to block these hormones' receptors, which are the pathways by which breast cancer cells are stimulated to grow. Once the receptors are blocked, the tumors starve and die.

Unfortunately, not all breast cancers respond to these treatments. Ten to 20% of tumors are deemed "triple negative," because they do not have the three aforementioned hormone receptors. There are no targeted therapies for triple negative breast cancer (TNBC). It is extremely aggressive and the mortality rates are high.

Raj Kumar, PhD, professor of biochemistry at TCMC and an internationally acclaimed researcher in the field of endocrine cancers, including breast cancer, is trying to change this.

Given the lack of effective targets in this subtype of breast cancers and the grim survival statistics for patients, there is an urgent need to develop new and novel therapies for TNBC.

Dr. Kumar wondered: if blocking the hormone pathway starved a hormone-positive tumor, what pathway could be blocked to starve a tumor not fed by hormones? What was feeding these aggressive cancers?

The answer turned out to be the glucocorticoid receptor (GR) which regulates the biological effects of cortisol, the body's stress hormone, at the level of gene regulation. The adrenal glands release cortisol in response to fear or stress as part of a person's fight-or-flight survival mechanism. However, prolonged stress—when the body is inundated with cortisol over and over—has been linked with a number of diseases, including cancer.

Dr. Kumar's research indicates that higher gene expression of GR fuels TNBC. He discovered this by finding an elevated

amount of GR in TNBC cells derived from patients with TNBC tumors. When he found high amounts of the receptors, he found a high proliferation of TNBC cancer cells. Similar results have been reported by other research groups. A recent study showed that GR antagonists could decrease TNBC tumor growth.

Dr. Kumar is now researching a novel pathway to block GR to prevent TNBC tumors from growing, which could improve survival rates for patients. "I have been successful so far in targeting glucocorticoid receptors," Dr. Kumar said. "I'm now trying to identify a small molecule that can be developed into a drug capable of blocking the GR activity, which in turn may suppress specific target oncogenes."

Dr. Kumar is now testing his hypothesis with cellular models at TCMC. His long term goal is a clinical drug trial for cancer patients.

Dr. Kumar has co-authored over 100 publications in highly reputed peer-reviewed scientific journals. In early August, he gave the keynote speech, "A Novel Therapeutic Approach for Triple Negative Breast Cancer," at the World Congress on Breast Cancer in Birmingham, England, where he also chaired sessions on breast cancer diagnosis, treatment, side effects and pathology. The following month, he published his second book, *Nuclear Receptors: From Structure to the Clinic* (Springer), which he co-edited with his colleague Iain J. McEwan, PhD from the University of Aberdeen, Scotland, UK.

"The critical role that GR-mediated pathways may be playing in TNBC is an emerging area of investigation and further research should lead to better treatment for patients who require more aggressive interventions. If my work could help prolong even one life, it will all be worth it."

RAJ KUMAR, PHD

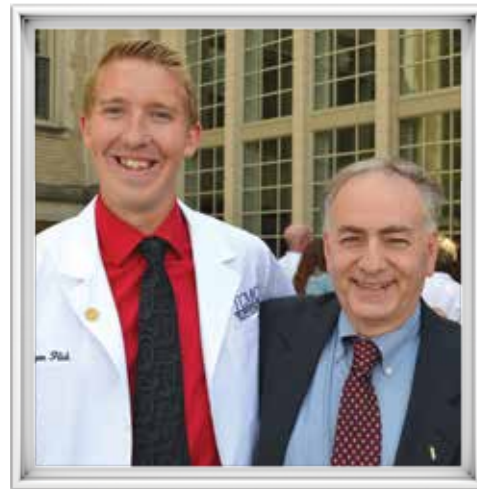


Future Physicians & Healers

TCMC held the Class of 2019 White Coat Ceremony on August 7, welcoming 105 students to our seventh doctor of medicine (MD) class.

Howard H. Weitz, MD, MACP, FACC, the Bernard L. Segal Professor in Clinical Cardiology at Jefferson Medical College, director of the Division of Cardiology and the Jefferson Heart Institute, senior vice chair for Academic Affairs in the Department of Medicine, and the clinical director of Jefferson's Heart and Vascular Service Line, presented the Dr. Lester Saidman Memorial Lecture.

Dr. Weitz told the audience the key secrets of success to being a physician and healer. His message to the new medical students was that when they look back on their careers, their relationships with their patients and their families will provide the most important memories.



White coats were provided by The Stanley J. Dudrick, MD, and Alan G. Goldstein Endowed Fund. L to R: Ryan Flick, MD1; Alan G. Goldstein

Below: Howard H. Weitz, MD, MACP, FACC, presented this year's Dr. Lester Saidman Memorial Lecture. The lecture series honors Lester Saidman, MD, a well-respected physician and educator from Luzerne County. L to R (front): Carol Saidman Greenwald; Melissa Saidman; Steven J. Scheinman, MD, president and dean of TCMC; Howard H. Weitz, MD, MACP, FACC; Karen Glanz, PhD, MPH; Sheila Saidman, Esq.; Steven Kafrissen, MD; L to R (back): Bruce Saidman, MD; Ben Weitz; David Greenwald, MD; Jakob Saidman, MD2.



TCMC's Newest Regional Campus

In July, Guthrie and TCMC signed an educational partnership agreement, marking Guthrie as TCMC's fourth regional campus. This affiliation means Guthrie will be a clinical education site for a significant number of TCMC's medical students.

Joseph Scopelliti, MD, CEO and president of Guthrie, said: "Guthrie has a long tradition in medical education dating back to our first interns in 1925. Partnering with a medical school in a larger role is exemplary of the learning environment which we have sought for our entire system. Our focus on providing excellent, integrated health with an emphasis on continuous learning meant that we wanted to find a

partner who shared those same values and goals. We have found that partner in TCMC."

Steven J. Scheinman, MD, president and dean of TCMC, said: "We are tremendously excited to be formalizing this partnership. Guthrie has a long and impressive history of medical education, and as an integrated system Guthrie will give our students an excellent experience in 21st-century medicine. Dr. Scopelliti and his team have been excellent partners in these discussions. It is clear that our two organizations share the same mission and values, to improve the care of patients throughout this region and to strengthen the physician workforce."



Joseph Scopelliti, MD (left), CEO and president of Guthrie, and Steven J. Scheinman, MD (right), president and dean of TCMC, sign an agreement between the two organizations.

"We have found that partner in TCMC."

JOSEPH SCOPELLITI, MD



Congratulations, Rachel Brutico, MD '16, and Vince Giannotti, MD '16.



Alumni from TCMC's first MBS class reunited at a wedding celebration in October. L to R: Sean Wallace, MBS '10, MD '14; the groom, Mike Farrell, MBS '10, MD '14; Linnea Mehls, MBS '10.

CLASS NOTES

Rachel Brutico and Vince Giannotti, both of the MD Class of 2016, married on September 6, in Scranton. Rachel and Vince met during first-year orientation at TCMC.

Eric Drago, MD '17, is engaged to Noelle Vrablic. A September 2016 wedding is planned at Ehrhardt's Waterfront Resort in Hawley, PA.

Mike Farrell, MBS '10, MD '14, who proposed to his wife Lydia outside of TCMC's Medical Sciences Building on Match Day 2014, married on October 24 in Delaware.

Andrew Gilmore, MD '18, is engaged to Cindy Mareck.

Several TCMC students attended the annual Pennsylvania Medical Society Conference in Hershey in October. **John Trickett, MD '18**, earned the role of Medical Student Trustee. **Leanne Woiewodski, MD '19**, won the position of student representative for the Pennsylvania Medical Political Action Committee. Also, several students acted as delegates for their respective counties as well as for TCMC.

Have a life event you'd like to share?: tcmc.edu/alumniupdate

SAVE THE DATES!

Friday, March 18, 2016: MD Class of 2016 Match Day • Sunday, May 8, 2016: Commencement

NEW FACULTY MEMBERS



Janet Erickson, MD
Assistant Professor of Medicine
Dept. of Family, Community and Rural Health



Tina Marie George, MD, MPH
Assistant Professor of Family Medicine
Dept. of Family, Community and Rural Health



Anthony Guillorn, MBS '15
Instructor of Basic Sciences



Amanda Kardys, MBS '15
Instructor of Basic Sciences



Venard Scott Koerwer, EdD
Professor of Organizational Systems and Innovation
Dept. of Family, Community and Rural Health



Elizabeth Kuchinski, MPH
Instructor of Family Medicine
Dept. of Family, Community and Rural Health



Maximo Llaudes, MD
Assistant Professor of Clinical Pathology
Dept. of Family, Community and Rural Health



Kathleen Tigue, MD, FAAP

Spotlight on KATHLEEN TIGUE, MD, FAAP Academy of Clinical Educators (ACE) Faculty Fellow

From the time she was chief resident at the University of Rochester Medical Center to her present role as assistant professor of pediatrics at TCMC, Kathleen “Kate” Tigue, MD, FAAP, has been able to combine her two passions: pediatrics and teaching.

Dr. Tigue came home to the Scranton area in 2000 to raise her children, now ranging in age from nine months to 16 years. When she heard her colleagues discussing a new medical school in northeastern Pennsylvania, Dr. Tigue was eager to get involved. “I could see how a medical school would be a boon for the community by improving health care,” she said.

When TCMC’s charter class arrived, Dr. Tigue served as both assistant professor and regional education coordinator (REC) for pediatrics for the North Campus. She found the students’ excitement contagious.

“Their inquisitive nature is energizing,” she said. “I like that TCMC’s curriculum allows physicians such an extended period of time with their students. It’s gratifying to see students learn and master new skills.”

Dr. Tigue is the chair of the Pediatric Council of the Pennsylvania chapter of the American Academy of Pediatrics, which works on behalf of pediatricians on issues regarding proper insurance payments from insurance companies to ensure children receive coverage. She is also the managing partner of Pediatrics of Northeastern Pennsylvania.

New Basic Sciences Chair Brings Extensive Research and Education Experience

TCMC recently named Pamela Lucchesi, PhD, FAHA, as its new chair of Basic Sciences and professor of physiology. Dr. Lucchesi brings to TCMC an extensive background in research, education and curriculum development. She will play a critical role in curriculum development and education for our students, and in mentoring the success of our faculty. She will also be involved in developing opportunities for translational research programs that will result in improved patient care in our community.

Prior to arriving at TCMC, Dr. Lucchesi served for seven years as center director and professor of pediatrics at Nationwide Children’s Hospital and Ohio State University. Dr. Lucchesi has had thirty years of National Institutes of Health-funded research in cardiovascular disease and twenty-five years of experience as a medical student educator. She is an expert in coronary artery disease and heart failure and is a fellow of the American Heart Association.

Dr. Lucchesi is the author of ninety scholarly publications and five book chapters. She has chaired several study peer review panels at the NIH and is an associate editor of Physiology. She earned a BA in Biology from Assumption College and a PhD in Biomedical Sciences from the University of Massachusetts Medical School, both in Worcester, MA.

She said, “I chose to come to TCMC because of the mission, particularly the innovative curriculum and focus on community medicine. I am passionate about community outreach and underrepresented minority education and training.”

Pamela Lucchesi, PhD, FAHA



Richard O'Brien, MD, (right) with David Rupprecht (left), a third-year medical student at TCMC. In this photo, Dr. O'Brien is shown congratulating David for receiving the 2015 Medical Student Professionalism and Service Award from the American College of Emergency Physicians.

IN MEMORIAM: RICHARD O'BRIEN, MD

Richard O'Brien, MD, was as passionate about teaching as he was about TCMC, which he called “a phenomenal institution.” He said he taught because of “the joy of seeing students evolve into doctors.” He served as an associate professor of medicine and faculty advisor of TCMC’s Emergency Medicine Interest Group.

Dr. O'Brien worked in emergency medicine for over 30 years, primarily at Moses Taylor Hospital, and was employed by Med Express in Wilkes-Barre. In addition to educating TCMC students, he also served as an instructor in the paramedic program at Luzerne County Community College. He was often a featured writer for the publication *Bottom Line Health*, a public health magazine, sharing real-life ER stories.

David Rupprecht, a third-year medical student at TCMC, shares, “Dr. O'Brien was a youthful, energetic soul who possessed an immense passion for emergency medicine. He always brought out the best in his students and was willing to do whatever it took to help them succeed. For me, Dr. O'Brien was a mentor, teacher, and above all, a friend. His unique sense of humor was appreciated by friends and patients alike, and likewise his desire to help others was easily evident within minutes of first meeting him. He will be missed by so many in NEPA, but I'm certain that his spirit will continue to live on through his friends, colleagues, students, and mentees.”



Speakers touted TCMC's economic and community impact at a press conference on September 28. L to R: John Moses, Esq., TCMC board of trustees; Steven J. Scheinman, MD, president and dean of TCMC; Paul Umbach, founder and president of Tripp Umbach; Teri Ooms, executive director of The Institute for Public Policy & Economic Development; Robert Durkin, president of the Greater Scranton Chamber of Commerce; Wico van Genderen, president and chief executive officer of the Greater Wilkes-Barre Chamber of Commerce.

TCMC Study Shows \$65 Million Impact on Local and State Economies

The results of a recent economic and community impact study showed that TCMC contributed \$65 million to northeastern and north central Pennsylvania and the Commonwealth as a whole in its fiscal year 2014.

"In ten years, TCMC grew from an idea among friends to an economic engine and significant employer for this region," said President and Dean Steven J. Scheinman, MD. "When you combine our monetary impact with the thousands of volunteer hours delivered by our students and employees, it's clear we are a valuable benefit to not just our local area, but the entire Commonwealth."

Teri Ooms, executive director of The Institute for Public Policy & Economic Development, said, "TCMC is a true regional asset—one that delivers economic impact to the region, but equally as important, delivers qualitative impact beyond the nature and purpose of a traditional medical school. TCMC engages its faculty, staff and students in the communities they serve. Their volunteerism and philanthropy are critical to the region. Further, TCMC has been engaged in providing healthcare career education to disadvantaged high school students throughout the region for a number of years."

View the full report: tcmc.edu/economicimpact

Significant findings of the study:

- The economic impact of TCMC operations on the Commonwealth of Pennsylvania in FY14 equaled \$65.2 million (\$28.4 million direct impact and \$36.9 million indirect impact).
- TCMC supports 263 jobs in the Commonwealth of Pennsylvania, including 146 direct full-time equivalent positions representing jobs for 202 people directly employed by TCMC, and 117 indirect full-time equivalent positions.
- The statewide government revenue impact of TCMC equaled almost \$3.3 million in FY14.
- TCMC employees and students generate more than \$1.9 million annually in charitable donations and volunteer services, including almost \$800,000 donated to local charitable organizations and more than \$1.1 million in the value of volunteer time provided to area communities.
- TCMC increases access to education through its Regional Education Academy for Careers in Health—Higher Education Initiative (REACH-HEI), a pipeline program for students in northeastern Pennsylvania who are interested in health-related professions.

Donor Spotlight: DR. GINO MORI The Dr. Gino and Mrs. Jean Cavalieri Mori Endowed Scholarship

Born and raised in Old Forge, PA, Gino Mori, MD, FACS, has dedicated his life to caring for his patients, for the community and for students throughout the region.

After graduating from Old Forge High School, Keystone College and what was then Penn State College, Dr. Gino (as he prefers to be called) earned his Doctorate of Medicine at Jefferson Medical College. Following an internship at the Scranton State General Hospital, he completed a four-year residency in General Surgery at the Philadelphia Veterans Affairs Medical Center. Together with his brother Hugo Mori, MD, Charles Bannon, MD, and their partners, he became the founding president of Delta Medix and its Breast Care Center in Scranton, PA.

Throughout his career, Dr. Gino served in leadership roles in the medical and higher education communities. He was president of the Lackawanna County Medical Society and has held seats on the boards of Keystone College and Penn State Worthington Scranton. He received the Alumni Fellow Award from the Pennsylvania State University.

Dr. Gino married his high school sweetheart, Jean Cavalieri, with whom he had five children. They celebrated their 50th wedding anniversary shortly before she died in 2006. Both he and Jean were dedicated to a lifetime of learning. Even in retirement, he continues to take classes.

With the establishment of The Dr. Gino and Mrs. Jean Cavalieri Mori Endowed Scholarship at TCMC, Dr. Gino once again has demonstrated his commitment to community and to excellence in the medical profession.

A Special Commemorative Poster

Dr. Gino Mori recently commissioned the world-renowned graphic artist Milton Glaser to honor TCMC and its goals by designing a poster. The poster titled "Good Care Begins with Caring" commemorates the establishment of The Dr. Gino and Mrs. Jean Cavalieri Mori Endowed Scholarship. The framed poster



MOST SUCCESSFUL GOLF CLASSIC TO DATE

TCMC's 7th Annual Golf Classic, held on June 8, at Glenmaura National Golf Club, grossed over \$87,000 in support of student scholarships.

Right: PNC Bank served as the tournament's presenting sponsor. L to R: Peter Danchak, regional president of PNC Bank; Steven J. Scheinman, MD, president and dean of TCMC; John Mesko, president of ThermoLite, Inc.; Nick Parise, vice president of wealth management at PNC Bank.



hangs in the lobby of TCMC's Medical Sciences Building in Scranton.

Mori Scholarship donors who give between \$200 and \$999 will receive a copy of the poster. As a special thank you for a gift of \$1,000 or more, donors to the Scholarship will receive a copy that has been signed by the artist. A limited number of posters are available.

Milton Glaser shares his thoughts while designing the poster for TCMC:

"I began with the meaning of the word 'care' and then related it to the idea of 'caring.' The image is symbolic of our institution's attitude. We reach for our audience through the pleasurable image of a flowering bouquet, resting on a classical column, the latter suggesting traditional skill and understanding.

"All significant posters combine words and images to effectively convey their message, but are only effective when they are believed."



Learn more about The Dr. Gino and Mrs. Jean Cavalieri Mori Endowed Scholarship, as well as the commemorative Milton Glaser poster: tcmc.edu/mori

ACADEMY OF CLINICAL EDUCATORS (ACE)

TCMC would like to extend our sincere appreciation to our volunteer clinical faculty members.

North (Scranton) Clinical Faculty

FAMILY MEDICINE

Christopher Andres, MD
Paula Bennett, MD ^
Lee Besen, MD
John Brinker, DO
Glenn Buyo, DO
Jihad Charabati, MD
Diane Ciaglia, MD
Sharon Cline, MD
Peter Cognetti, MD
Patrick Conaboy, MD
Debra Conklin, PA-C
Bruce Davis, MD
Warren DeWitt, MD
Ian Foster, MD
Tina George, MD
Rose Guilbe, MD
Marika Handakas, LCSW, PsyD
Lindsay Hughes, DO
Mary Alice Jacquinot, IHM
Louis Kareha, DO
Daniel Kazmierski, MD
Yelena Kipervas, DO
Michael Kondash, DO
Thomas Majernick, DO
Gerard Maritato, MD
John Mcintyre, MD
William Miller, PhD, MHA
Dana Montgomery, DO
Jeffrey Montgomery, DO
Ruth Neely, MSN, RSM, CRNP
Martin Penetar, DO
Andrea Picozzo, PA-C
Paul Remick, DO
Lisa Robertson, DO
Dominic Ruggiero, DO
Gary Russell, MD
Susan Russell, MD
Olapeju Simoyan, MD, MPH
Jon Sternburg, MD ^
Cheryle Stone, MD
Aparna Tamaskar, MD
Solibe Ufondu, MD
Kenneth Varano, DO
Jennifer Weidner-Clark, PA-C
David Wood, DO
Edward Zurad, MD ^

MEDICINE

Haitham Abughnia, MD
Louis Adamo, MD
Madhava Baikadi, MD

Anurag Bajaj, MD
Pardeep Bansal, MD
Susan Baroody, DO
Linda Barrasse, MD
Carl Barsigian, MD, PhD
Gregory Basting, MD *
Lucian Bednarz, MD
Cherrie Bentler, CRNP
Susan Biancarelli, MD
Monodeep Biswas, MD
William Borde-Perry, MD
Gregory Borowski, MD
Pranjali Boruah, MD
Harmar Brereton, MD *
Randall Brundage, DO
Steven Brunetti, DO
Michael Burke, MD
Timothy Burke, DO
Gary Calandra, MD
Gregory Cali, DO
Peter Casale, MD
Carmine Cerra, MD *
Gabriel Ceron, MD
Nicole Chiappetta, DO
Ariane Conaboy, DO
John Consalvo, MD
Benjamin Cooper, MD
Claudia Corona, MD
Michael Costello, JD
Mark Crowell, DO
James Cummings, MD
Ralph DeMario, MD
Louis DeNaples, MD
Leonard Denis, MD
William Dewar III, MD ^
Vithal Dhaduk, MD
John Diakiw, MD
Glen Digwood, DO
Mary Jane DiMattio, PhD
Nanci Dobson, RN
Christopher Donohue, MD
Matthew Downey, MD
Christopher Dressel, MD
Edward Dzielak, DO ^
Thomas Dzwonczyk, MD
Jeremiah Eagen, MD
Janet Erickson, MD
Rodger Fagerburg, MD
Natale Falanga, MD
John Farrell, MD ^
Peter Favini, MD
Ward Fitzpatrick, MD
Vincent Francescangeli, MD
Linda Frantz, MD
Anthony Freda, DO
Gordon Fried, DO
Jose Fuentes, MD

Andrew Furman, MD
Stylianou Galanakis, MD
Tracey Galardi, MD
Michael Gallagher, MD
Luiz Galvao, MD
Susheer Gandotra, MD
Kenneth Gentilezza, MD
Roger Getts, DO
Vitaly Geyfman, DO
Michael Gilhooley, MD
Brian Goldberg, MD
Jonathan Goldner, DO ^
Kiran Goli, MD
Virginia Gortych Barnes, MD
Eugene Grady, MD
Marna Greenberg, DO
Tyler Greenberg, DO
Giriwarlal Gupta, MD
John Guzek, MD
Kirk Hinkley, MD
Christopher Hobbie, MD
Timothy Hou, MD
Andre Hylton, MD
Martin Hyzinski, MD
Pavan Irukulla, MD
Sybil Irwin, MD
David Isgan, PA-C, MHS
Praveer Jain, MD
Seth Jones, MD
Jila Kaberi-Otarod, MD
Nalini Kakimallaiah, MD
Suman Katara, MD
Richard Katz, DO
Christine Kendzor, RN
Marc Keuler, MD
Hassan Khalil, MD
Yasser Khalil, MD
Iqbal Khan, MD
James Kim, MD
Michael Kim, DO
Marc Kolpon, DO
Dariusz Koscielniak, MD
Joseph Koval, MD
Mohamed Lareef, MD
Joel Laury, MD
Jakub LeKach, MD
Joseph Leo, DO
Samuel Lesko, MD
Matthew Levy, MD
Kenneth Lilik, MD
Richard Lippin, MD
Kristin Liptock, DO
John Lundin, MD
Paul Mackarey, PT
Robert Malcolm, MD
Javed Malik, MD
Ferdinand Manahan, MD

Anita Marchegiani, RN
Michael Marte, MD, FACP
Steven Mazza, MD
Alice McCormick, DO
Mollie McGinley, MD
Bojana Milekic, MD
Carl Milks, MD
Greg Miller, DO
Barry Minora, MD
Thomas Minora, MD
Wasiq Mirza, MD ^
Michael Moore, MD
Dean Mozeleski, MD
Rajan Mulloth, MD
Mark Murnin, MD
Minh Nguyen, DO
Leroy Nickles, MD
Louis O'Boyle, DO
Michael O'Donnell, MD ^
Cynthia Oleski, MD
Sheryl Oleski, MD
Allen Orehek, MD
Titilayo Osuntokun, MD
Diptis Pancholy, MD
Samir Pancholy, MD
Bharat Patel, MD
Suman Patel, MD
Lisa Pathak, MD
John Paulish, DO
Anthony Perry, MD
Christopher Peters, MD ^
John Peters, MD
Michael Pistoria, DO
Christine Policare, MD
Vidya Ponnathpur, MD
John Prior, DO
Mark Rainey, MD
S. Ramakrishna, MD
Julio Ramos, MD
Raymond Resnick, MD
David Reynolds, MD
Joseph Rienzi, MD
Saul Rigau, DO
Sandro Rodrigues, MD
Thomas Roe, MD
Ellis Rucker, MD
Georges Chamoun, DO
Harold Davis, MD *
John Drozdick, MD
Gerri Evans, CRNP, CNM
Robin Gallagher, PhD
Heather Gosch, CNM, MSN, RN
Francis Hamm, MD
Elaine Hercher, CNM
Shadi Kayed, MD
Lorraine Kishel, CRNP
Frank Kolucki, MD

Harneet Sethi, MD
Gregg Severs, DO ^
Mary Sewatsky, MD
Edward Sherwin, MD
Jignesh Sheth, MD
Ajay Shetty, MD
Shubhra Shetty, MD
Abdalla Sholi, MD
Rajwinder Singh, MD
Eric Smith, DO
Jason Smith, MD
Stafford Smith, MD
Joseph Speicher, DO
Jamie Stallman, MD
James Sundheim, MD
Charles Sutton, MD
Sherine Tadros, MD
Lisa Thomas, MD
Linda Thomas-Hemak, MD
Beverly Tomasetti, MSN, BSN, RN, CRNP
Frederick Toy, MD
Gerald Tracy, MD *
Kishori Veerabhadrappe, MD
Luis Vera, MD
Stephen Voyce, MD, FACP, FACC, FSCAI
Chad Walker, DO
Robert Wallen, MD
Richard Weinberger, DO
Daniel West, PhD
Daniel Williams, MD
Lori Williams, MD
Michael Wolk, MD
Robert Wright, MD
Henry Yeager, MD *
Michael Yoder, MD ^
Jennifer Zangardi, MD
David Zimmerman, DO

OBSTETRICS AND GYNECOLOGY

Michelle Aldrich, CRNP
Maria Bigus, DO
Richard Burns, DO
Georges Chamoun, DO
Harold Davis, MD *
John Drozdick, MD
Gerri Evans, CRNP, CNM
Robin Gallagher, PhD
Heather Gosch, CNM, MSN, RN
Francis Hamm, MD
Elaine Hercher, CNM
Shadi Kayed, MD
Lorraine Kishel, CRNP
Frank Kolucki, MD

Mehran Langroudi, MD
Philip Lawrence, MD
Bonnie Lorenzetti, CRNP
Kristine Maxwell-McNulty, MD, FACOG
Lucinda Mirra, DO
Mark Molnar, DO
Vladimir Nikiforouk, MD
Thomas O'Brien, MD
Christian Ornburn, CNM
Joanne Pellicane, MD
Christine Phillips, DO
Barbara Plucknett, MD
Marc Rabin, MD
Gary Reedy, MD
Thomas Samuelson, MD
Michael Tedesco, DO
Andrea Tomassoni, MD
Yardlie Toussaint-Foster, DO
Denise Viola, DO
Brian Wilcox, MD, PhD
Peter Yaswinski, Jr., MD
Daying Zhang, MD

PEDIATRICS

Mohammed Abdu, MD
Rajesh Bhagat, MD
Stanley Blondek, MD
Jose Bordas, MD
Roseanne Cech, MD
Sanjay Chandragiri, MD ^
Francis Dawgert, MD *
Luis De La Fuente, MD
Rebecca Deeley, MD
Elizabeth Escalante, MD
Debra Georgetti, MD, FAAP
Garry Hamilton, MD
Christopher Lynch, MD
Beatriz Maidana, MD
Thomas Martin, MD
John Marx, MD, FAAP
Jill McCoy, MD
Mikhail Mirer, MD
Sushil Mody, MD, MBA
Anders Nelson, DO
Gregg Novak, DO
Randolph Nunez, MD
Alexander Pinsky, MD
Nina Poliak, MD, MPH
J. Delfor Salazar, MD
Martha Sauter, MD
Lori Shippy, MD, FAAP
Sarah Sitoski, DO
Kathleen Tigue, MD ^
Paul Tomcykoski, DO
Mary Jane Torres, MD
April Troy, MD

Ramlah Vahanvaty, MD
Cecilia Ventura, MD
Luis Vera, MD
Kathleen Walsh, MD
Timothy Welby, MD
Daniel Williams, MD
Barry Yoss, MD
Jeffrey Zero, DO

PSYCHIATRY

Eleanor Antolin, MD
Nelson Asante, MD
Matthew Berger, MD
Sanjay Chandragiri, MD ^
Rasheshkumar Dholakia, MD
Thomas DiPaola, PsyD
Joseph Feistl, PA-C
Tasneem Hussainee, MD
David Jones, PA-C
Kenneth Lattimore, MD
Edward Lee, MD
Thomas Meyer, MD
Arthur Middleton, MD
Robert Morrow, MD
Maria Murnock, PA-C
Ali Nourian, MD
Oladapo Osuntokun, MD
Varsha Pandya, MD
Cyril Puhalla, MD
Muhammed Rahman, MD
Burton Reilly, MA
Chung Rhee, MD
Adharsh Sahadevan, MD
Robert Shaw, PsyD
Richard Silbert, MD
Charles Spitzer, PA-C
William Steinbach, MD
Martha Turnberg, MD
Ralf Wildner, MD

Robert Yager, DO
Igor Yampolsky, MD

SURGERY

Subhash Arora, MD
William Auriemma, MD
Charles Bannon, MD *
Joseph Bannon, MD ^
Frederick Barnes, MD
Edward Batzel, MD
Albert Belardi, MD
Eric Blomain, MD *
Thomas Boland, MD
Gregory Bormes, MD
Krista Bott, MD
Anthony Brutico, MD
Casey Burke, DO
Kevin Casey, MD
Maurizio Cibischino, MD
Rick Clay, MD
Darell Covington, MD
Cynthia Cuyegkeng-Jose, MD
Thomas Meyer, MD
Arthur Middleton, MD
Robert Morrow, MD
Maria Murnock, PA-C
Ali Nourian, MD
Oladapo Osuntokun, MD
Varsha Pandya, MD
Cyril Puhalla, MD
Muhammed Rahman, MD
Burton Reilly, MA
Chung Rhee, MD
Adharsh Sahadevan, MD
Robert Shaw, PsyD
Richard Silbert, MD
Charles Spitzer, PA-C
William Steinbach, MD
Martha Turnberg, MD
Ralf Wildner, MD

Michael Kline, MD
Ira Kohn, MD
Ira Krafchin, MD ^
John Kutz, MD
Mohammed Lareef, MD
Zabiullah Latif, MD
Brian Lenczewski, MD
Philip Liu, MD
Edwin Malloy, MD
Patricia Martz, MD
Scot McKenna, MD
David Meir Levi, DO
Paul Metzger, MD
Michael Moore, MD
Gino Mori, MD
Gerald Negvesky, MD
Anthony Nostro, MD
David Onofrey, MD *
John Paglia, MD
Randall Peairs, MD
Donald Preate, MD ^
Keith Pritchky, MD
J. Robert Ramey, MD
Gerald John Rossini, MD
John Rich, MD
James Roche, MD
Jason Rudolph, MD
Joseph Ruzbarsky, MD
Scott Sauer, MD
Harry Schmaltz, MD
Alessandro Smeraldi, MD
James Stefanelli, MD
Michael Sunday, MD
Musa Tangoren, MD
Nicolas Teleo, MD
Abohawariat Tesfaye, MD
Gregory Thomas, DO
Theodore Tomaszewski, MD
Michael Tracy, MD ^
Lear Von Koch, MD

Kathryn Wheel, MD
John Williams, MD
Garth Willis, MD
Eric Wilson, MD
J. Garry Wroblecki, DO
Douglas Young, MD
Nche Zama, MD, PhD

South (Wilkes-Barre) Clinical Faculty

FAMILY MEDICINE

Alan Boonin, MD
Louise Breakstone, MD
John Carey, MD
Douglas Charles, DO
Mario Cornacchione, DO
William Dempsey, MD
Richard English, MD *
Stephen Evans, DO
James Galasso, DO
Elizabeth Gernhardt, DO
Eugene Gorski, MD ^
Lynda Graves, MD
James Greenfield, DO
John Haber, DO
Aaron Haydu, DC
Irvin Jacobs, MD
James Jiunta, DO
Ernest Julius, MD
John Kish, DO
Michael Kordek, MD
Kimberly Kovalick, DO
Michele Kowalski-McGraw, MD
Matthew Kozicki, MD
Leonard Kuchemba, MD
Seema Kumari, MD
Phillip Kurello, MD
Anja Landis, MD
Maureen Litchman, MD ^

Mark Lobitz, DO
Cynthia Lubinsky, DO
Charles Manganiello, MD
Richard Oley, DO
Frank Olshemski, MD
Christina Raguckas, DO
Guillermo Rodriguez, MD
Enrique Samonte, MD
Mary Elizabeth Sokach, DO
Luigi Spagnolini, MD
Deborah Spring, MD ^
Scott Sterling, DO
Jurgen Straub, MD
James Tricarico, DO
Elaine Turcan, DO
Barbara Vilushis, DO
Ira Vohra, MD
Michael Washinsky, DO
Susan Werner, MD
Janusz Wolanin, MD
George Yurko, DO

MEDICINE

Michael Adler, MD
Christian Adonizio, MD
Navid Ahmad, MD
Bina Ahmed, MD
Samir Akach, MD ^
Mirza Ali MD
Quaser Amin, MD
Nicole Balchune, DO
Natalia Belikova, MD
Philip Benyo, MD ^
Mauer Biscotti, MD
Richard Blum, MD
Gary Bonfante, DO
James Bruno, MD
Stephanie Cabello, MD
Robert Cameron, MD

John Citti, MD
Lisa Costaris, DO
Atul Dalsania, MD
Gary Decker, MD
Pramthesh Desai, MD
Robert Dompkosky, DO
Noel Estioko, MD
Masoud Firouzi, MD
Glenn Freed, DO
Gwen Galasso, MD ^
Nestor Garcia, MD
Sanjeev Garg, MD
Martha Ghosh, MD
Gerald Gibbons, MD
David Grasso, MD
David Greenwald, MD ^
Faisal Hamid, MD
Sun-Tak Han, MD
Gil Hoang, MD
Neil Holland, MD
William Hottenstein, MD
Patricia Ihnat, DO
Mohammad Iqbal, MD
Raymond Joseph, MD
Christina Raguckas, DO
Guillermo Rodriguez, MD
Enrique Samonte, MD
Mary Elizabeth Sokach, DO
Luigi Spagnolini, MD
Deborah Spring, MD ^
Scott Sterling, DO
Jurgen Straub, MD
James Tricarico, DO
Elaine Turcan, DO
Barbara Vilushis, DO
Ira Vohra, MD
Michael Washinsky, DO
Susan Werner, MD
Janusz Wolanin, MD
George Yurko, DO

* = ACE Master ^ = ACE Fellow

ACE continued...

Rajidi Reddy, MD
Alfonso Rodriguez, MD
Paul Rutkowski, MD
Bruce Saidman, MD ^
Helmi Saud, DO
Stephen Schleicher, MD
Brent Schoenfeldt, DO
Norman Schulman, MD
Mark Scinico, MD
Stephen Shoemaker, DO
Jude Sidari, MD
Jeffrey Smarse, DO
Ashok Subramanian, MD
Anuradha Tunuguntla, MBBS
Shailesh Unjia, MD
Anthony Veglia, MD
Joyce Vrabec, DO
Ryan Withrow, MD
Shu Xu, MD, PhD
David Yatsonsky, MD
Aamir Zaman, MD, PhD

OBSTETRICS AND GYNECOLOGY

Theresa Baseski, DO
Hans Cassagnol, MD
Douglas Coslett, MD ^
Lynne Coslett-Charlton, MD
Jennifer Episcopo, MD
Michael Ferraro, MD
Timothy Grube, DO
Sheila Hockman, DO
Deborah Khalife, PA-C
David Krewson, DO
David Lezinsky, DO
Sandra Mattison, MD
Scott Muir, DO
Joseph Narins, MD ^
Richard Tomczyk, DO
George Tsoutsoplides, MD
Ayesha Usman, MD
Louisa Voutsinas, MD
Ilene Weizer, MD
James Xenophon, MD
Rachel Yenkowski, PA-C, MSPAS
Akram Zalatimo, MD

PEDIATRICS

Bernard Adukaitis, DO
Naghma Aijaz, MD
Carol Bilinski, MD
James Caggiano, MD ^
Robert Childs, MD
Karen Ephlin, MD
Stephan Glick, MD ^
Michael Harris, MD
Kabir Keshinro, MD
Raymond Khoudary, MD

Jeffery Kile, MD
Marie Lena, MD
Douglas Lincoln, MD ^
Irene Man-Hsiao, DO
Michele Monaco, MD
Debra Papp, CRNP
Ruchika Passi, MD
Vijay Prasad, MD
John Rogers, MD
Azra Sehic, MD ^
Michele Sudo, MD
Bethany Venit, MD

PSYCHIATRY

Nilesh Baxi, MD
Elmer Cupino, MD
Richard Fischbein, MD ^
Rajendra Gajula, MD
Steve Kafriksen, MD ^
Linda McDonnaugh, MD, PhD
Mushfiqur Rahman, MD
Michael Raymond, PhD
Jeanne Rinehouse, MD
Francisco Santos, MD
Stephen Scharding, PA-C
Rakesh Sharma, MD
Pareshkumar Solgama, MD
Uchenna Uzoukwu, MD

SURGERY

Thomas Allardyce, MD
Peter Andrews, MD
Michael Banas, MD
David Barras, MD
Robert Boran Jr., MD
Charles Burns, MD
Christopher Buzas, DO
Thomas Byron, MD
William Charlton, MD
Ghazali Chaudry, MD
Dean Clerico, MD
Francis Collini, MD
Roger Crake, MD
Walter DelGaudio, MD ^
Juan Derojas, MD
Robert Fiorelli, DO
Anton Georgiev, DO
Clark Gerhart, MD
John Guerriero, DO
Philip Hlavac, MD
Erik Kruger, MD
Brian Marien, MD
Louis Mariotti, DO
Steven Marra, MD
Michael Martinez, MD
Joseph McGraw, MD
Thomas Meade, MD

Victor Nakkache, MD
Rajamanickam Natarajan, MD
Gary Neale, MD
Frank O'Brien, MD
Michael Oleginski, DO
Michael Raklewicz, MD
Harvey Reiser, MD
Michael Rittenberg, MD
George Ritz, MD
Samuel Rizzo, MD
Daniel Rossi, DO
Imran Saeed, MD
Donald Savage, MD
Mark Schiowitz, MD *
Joseph Schulz, DO
Mohammad Shaikh, MD
Javad Sholehvar, MD
George Speace, MD
Eugene Stec, MD
Aldo Suraci, MD
Robert Szulborski, MD, PhD
Albert Torres, MD
Gary Verazin, MD
Glenn Weaver, DO
Pamela Welsh, CRNP
Chester Yavorski, MD

West (Williamsport) Clinical Faculty

FAMILY MEDICINE

David Ambrose, MD
Elizabeth Anderson, MD
William Bartlow, MD
Andrea Benoit, DO
Yekalo Beyene, MD
John Boll, DO
Michael Boyek, MD
David Bresticker, MD
Brian Buschman, MD
Sister Christina Cables, CRNP
James Callaghan, MD
Michelle Cavanaugh, MD
Kenneth Durrwachter, MD
Bethany Engal, PA-C
Todd Fausnaught, MD
Guy Giordano, MD
Edmund Guelig, MD
Jendy Harer, DO
Timothy Heilmann, MD *
Pamela Herrington, MD
Donald Hess, MD, MPH
Jesse Hickland, MD
Rachel Hogg, MD
William Keenan, MD
Ayn Kerber, MD
Quinn Kirk, MD

David Kuhns, MD
Kathleen Lewis, DO
Dave Lopatofsky, MD
LeAnna Lyne, DO
William Mattiace, MD
Matthew Meeker, DO
Donna Mullarkey, MD
Alexander Nesbitt, MD
Collier Nix, MD
Kenneth Obiaja, MD
William Peck, MD
David Pfisterer, MD
Luan Pham, MD
Mary Piergallini, MD
Kevin Pigos, MD
Steven Pinckney, DO
James Redka, MD
Lori Rinker, DO
Eddie Rodriguez-Lopez, MD

Janice Schifferli, DO ^
Mark Schildt, MD
Douglas Spotts, MD
Carrie Timko, MD
Jeffrey Verzella, MD
Christopher Wagner, MD
Thomas Wallace, MD
Michael Weisner, MD
Allen Wetzel, MD
Rosemary Wiegand, MD
Steven Yordy, MD

MEDICINE

Kristin Adams, MD
Waqas Adeel, MD
Bosede Afolabi, MD
Faryal Afzal, MD
Charles Agbemabiese, MD
Baryalay Ameree, MD
Steven Anselmi, DPM
Zeshan Anwar, MD
Hanae Bahr, MD
Navin Barot, MD
Puneet Basi, MD
John Becker, DO
Michael Belenko, MD
Joseph Bering Jr., MD ^
David Borys, MD
Karen Brady, DO
Patricia Braunegg, NPC, MSN
John Burks, MD
Jaclyn Cappel, MD
Lee Ciccarelli, MD
B. James Connolly, MD
Joseph Daoko, MD
Pramod Deshmukh, MD, FACC

John Devine, DO
Kendra Dolan, MD
Donald Dworek, DO
George Dy, MD
Shabbir Esaa, MD
Adwoa Essel, MD
C. Mitchell Finch, MD
Tanveer Gaibi, MD
Michael Gerst, DO
Navneet Gill, MD
Daniel Glunk, MD
Russell Gombosi, MD
Jan Goossens, MD
Judith Gouldin, MD
A. Tayfun Gurbuz, MD
Edward Gusick, DO, BDS
Nathaniel Hare, MD
Barbara Heere, MD
Vincent Herbst, MD
Lisa Hoffman, DO

Asif Javed, MD
Renuka Kakarala, MD
Matthew Kelleher, MD
Aaron Kolb, MD
Vishal Kuchaculla, MD
Vivek Kumar, MD
Yung-Tai Lin, MD
George Manchester, MD
Sean McCall, DO
William McCauley, MD
James McClain, DO
Colleen McCoy, MD
David Nagel, MD
Donald Nardone, MD
Ingrid Ockenhouse Donato, MD
Stuart Oliinsky, MD
William Pagana, MD
Mauricio Pineda-Roman, MD
Jennifer Pryor, MD
Robert Purcell Jr., MD
Cynthia Recinto, MD
Zachary Ritter, DPM
Warren Robinson, MD
David Schaefer, MD
Jason Schauer, MD
Joseph Scopelliti, MD
Gerhard Senula, MD, MBA ^
Mohammad Shafique, MD ^
Keith Shenberger, MD
Margrit Shoemaker, MD
Marcis Sodums, MD
Pamela Spigelmyer, PhD
Carmen Spinney, MD
Sam Stea, MD

PEDIATRICS

Dino Baca, DO
Praful Bhatt, MD ^
David Castellon, MD
Joseph DeMay, MD ^
Ralph Kaiser, MD *
Qasim Mahmood, MD ^
James Merrick, MD
Theresa Moff, CRNP
Mary Beth O'Hara, DO
Jessica Osman DO
Elam Stoltzfus, MD
Jerry Terwilliger, MD
Jennifer Wilner, MD

PSYCHIATRY

Jeremy Bennett, MD
Teresa Bianco, MD ^
Terri Calvert, MD
Richard Dowell, PhD
Shadi Duchesne, MD

Bernard Steinbacher, MD
David Talabiska, DO
Robert Trautwein, MD
Martin Van Dort, MD
Ashley VanOrd, PA-C
Molly Warnick, PA-C
Seth Weber, MD ^

OBSTETRICS AND GYNECOLOGY

Leonard Collins, MD ^
Susan Connell, NP
Richelle Cricks, CNM
Robert Donato, DO
Janice Dreher, CNM
Maria Fullana-Jornet, MD
Bonnie Galloway, CNM
Mary Hostetler, CNM
Angela Huggler, MD
Patricia Kaiser, CNM
Charles Lamade, MD ^
Marc Landsberg, MD
Sarah McElroy, DO
Heather Mecone, CMN
Carolyn Miele, CMN
George Miller, MD
Julia Redcay, DO
Farag Salama, MD ^
Paula Scolamacchia, PA-C
Russell Stankiewicz, MD
Joshua Stutzman, DO
Arlie Swailes, CNM
Kathryn Swatkowski, CNM
Ngozi Uchendu, MD
Jennifer Vasinda, DO
Sanchita Yadalla, MD
Frank Yartz, DO

Gary Eggerton, MFT
Michael Greenage, DO
Michael Hayes, PhD
Stephanie King, BSN, RN, CRNP
Marian Knapp, Med
Kathleen Marabella, MA
Michael Marceau, MD
Kimberly Maser, LCSW
Joan Moreau, MD
Vijay-Kumar Rekhala, MD
James Rose, MA
Punyabrata Roy, MD
Eduardo Rueda-Vasquez, MD
Robin Sammons, MSN
Patricia Segee, PsyD
Christie Seiler, CRNP
James Wool, LSW

Timothy Judge, MD
Kevin Kinkead, MD
John Kuri, MD
Nathalie Lavalley, MD
Michael Lazar, MD
Juan Lessmann, MD
R. Clifford Mihail, MD, MBA
H. Dean Mintzer, DO
James Morgan, MD
Christopher Motto, MD
Bradley Mudge, DO
Sai Nasser, MD
A.Scott Niditch, MD
Mark Osevala, DO
Timothy Pastore, MD
Renee Quarterman, MD
Aaron Rabinovich, MD
Rodwan Rajjoub, MD
Rene Rigal, MD
Steven Rockoff, MD
Sai Sajja, MD
Robert Silberg, MD
Matthew Souder, MD
Todd Stefan, MD
William Todhunter, MD
Douglas Trostle, MD
Hani Tuffaha, MD
John Turner, MD

SURGERY

Darius Abadi, DO
Ahmad Ahad, MD
Gary Ayers, DO
Louis Betz, MD
Glenn Bloiso, MD
Daniel Bozza, DMD
Patricia Bozza, DMD
Susan Branton, MD ^
Charles Burzynski, DDS
Joseph Choi, PhD, MD
Scott Croll, MD
Jeffrey Cundiff, PA-C
Ronald DiSimone, MD
Herbert Ecker, MD
Brian Foresman, MD
Marc Galin, CRNP
Scott Hartzell, MD

Guthrie (Sayre) Clinical Faculty

FAMILY MEDICINE

Maximos Attia, MD
Frank Belardi, MD
Frederick Bloom, MD
Mark Corey, MD

John Doty, MD
Michael Gillan, MD
Derrick Hoover, MD
Koryn Johnston, DO
Albert Lichtenstein, PhD, LMFT
Megha Manek, MD
Robert McClelland, MD
Lee Meyers, MD
Donald Phykitt, DO
David Pfisterer, DO
Thomas Yaeger, MD

MEDICINE

Jackie Clowes, MD
Ruth Crepet, MD
Sean Devine, MD
George Ellis, MD
Amr Elsis, MD
Marc Harris, DO
Han Koh, MD
Victor Kolade, MD
Thomas Leeson, DO
Charles Morrow, MD
Matthew Novak, MD
Sheela Prabhu, MD
James Raftis, MD
Najeeb Rehman, MD
I Am Resurreccion, MD
Debra Ryan, MD
Daniel Sporn, MD
Dwight Stapleton, MD
Veralyn Warrington, MD
Violeta Zeykan, MD

OBSTETRICS AND GYNECOLOGY

Peter Harewood, MD

Maranatha Lougheed, MD
Richard Lubell, MD
Russell Rees, MD
Gregory Schaefer, MD
James Scott, MD

PEDIATRICS

Sujata Das, MD
Nagwa Khadr, MD
Rowshanul Khan, MD
Angel Malavet, MD
Naveen Minumula, MD
Amechi Valentine Odife, MD
Abdul Qadir, MD
Jerry Terwilliger, MD

PSYCHIATRY

Charles McGurk, MD
Yalitza Marrero, LPC
Michael Post, MHA
Beverly Smith, MD

SURGERY

Jeffrey Alwine, DO
David Bertsch, MD
Burt Cagir, MD
Jospheh Choi, MD
William Dichtel, MD
Robert Fanelli, MD
Timothy Lindemann, MD
Silviu Marica, MD
Phillip Pellitteri, DO
Lawrence Sampson, MD
Sanjay Samy, MD
Harold Sussman, DO
Kirk Tolhurst, MD
Thomas VanderMeer, MD

FOUNDERS SOCIETY

Myer M. Alperin
Michael J. & Louise D. Altier
Anonymous
Pat & John Atkins
Dr. & Mrs. Charles J. Bannon
Benco Dental Company
Blue Cross of Northeastern Pennsylvania
Dr. Harmar D. & Leslie W. Brereton
Alice Bulger, Dr. Weimin Chen & Louis Shapiro
Community Medical Center
Community Medical Center Medical Staff
Drs. L. DeGennaro, A. Brucio, M. Frattali, K. Pritchuk
Delta Medix, PC
Dempsey Uniform & Linen Supply, Inc.
Fidelity Deposit & Discount Bank
First Liberty Bank & Trust
The Gentile Family
David & Carol Greenwald and Bruce & Melissa Saidman
David & Ann Hawk, Gertrude Hawk Chocolates
Beatrice T. Heveran, Esq. & Robert M. D'Alessandri, MD
Martin Hyzinski, MD
InterMountain Medical Group
Eugene Joseph Kane
Thomas F. & Flora K. Karam
Lackawanna County
Charlotte T. Schroeder Mack
Margaret Briggs Foundation
Richard C. & Sally W. Marquardt Family Foundation
Cliff & Ruth Melberger
The Medical Staff of Mercy Hospital
Mercy Health Partners
Kim & Rob Mericle
Mohegan Sun at Pocono Downs
Barbara Monick
Moses Taylor Health Care System
Moses Taylor Hospital Medical Staff
Morey & Sondra Myers
Dr. Robert W. & Claudia B. Naismith
Northeastern Eye Institute
Northeastern Rehabilitation Associates, PC
The Oppenheim Family
Penn Security Bank & Trust Company
The Roy W. Piper Charitable Trust
PNC
Pocono Health System
PrimeMed, PC
The Quandt Group, Inc.
Radiation Medicine Associates of Scranton
Radiological Consultants, Inc. & Advanced Imaging Specialists
Mr. & Mrs. Harold Rosenn
Drs. David Rutta, Bharat Patel, Christopher Barbarevech, Alexander Lalos & Edward Sherwin
Sanofi Pasteur
Gov. & Mrs. William W. Scranton
Scranton Area Foundation, Inc.
Scranton Orthopaedic Specialists, PC
Mr. Andrew & Dr. Susan Sordoni
Susquehanna Health
Taylor Nursing Center Fund of the Luzerne Foundation
Dr. & Mrs. Gerald P. Tracy
Wayne Memorial Health System
Wilkes-Barre General Hospital
Steve & Libby Wojdak
Dr. & Mrs. Robert E. Wright
The Wright Center for Graduate Medical Education
The Wright Center Medical Group



* = ACE Master ^ = ACE Fellow

DONOR REPORT [This report recognizes gifts received in fiscal year 2015 (July 1, 2014–June 30, 2015), including any matching gifts.]

Transformation Society

Anonymous
AppleSeed Foundation
Commonwealth Health System
Louis DeNaples
Alan G. Goldstein
Carol and David Greenwald, MD
Steven R. Kafrisen, MD and Sheila Saidman, Esq.
Thomas F. and Flora K. Karam
Keystone Sanitary Landfill, Inc.
Northeastern Eye Institute
Northeastern PA Health Care Foundation
PennTex Midstream Partners, LLC
Melissa and Bruce Saidman, MD
Scranton Area Foundation
Dr. Susan and Andrew J. Sordoni III
Susquehanna Health

Taylor Nursing & Rehabilitation Center Health and Wellness Fund of The Luzerne Foundation
Wyoming Valley Health & Education Foundation

Innovation Society

Allied Services Integrated Health System
Myer M. Alperin
Anonymous
Benco Dental
Benco Family Foundation
The Black Horse Foundation Inc.
Community Bank, N.A.
Dunmore Oil Co., Inc.
L. Peter Frieder Jr.
Halibut Blue, LLC
Healthcare Management Resources
Daniel and Joan Hilferty

InterMountain Medical Group, P.C.
Kane Is Able, Inc.
Lamar Advertising
Maslow Family Foundation
Mary E. McDonald
Mr. and Mrs. Clifford K. Melberger
Claudia B. and Robert W. Naismith, PhD
Drs. Dilipkumar and Minaben Patel
PNC Bank
Powers Pyles Sutter & Verville PC
The Quandel Group Inc.
Noble Quandel
Regional Hospital of Scranton Medical Staff
Schwab Charitable Fund
The Dr. Jennifer A. Sidari Scholarship Fund of The Luzerne Foundation
Sordoni Family Foundation
Sordoni Foundation Inc.
Times-Shamrock Communications
Carole and Robert E. Wright, MD

TCMC Blue Society

Ayotunde Adeagbo, PhD
Drs. James and Karen Arscott
Blue Cross of Northeastern PA
Bold Gold Media Group
Terese and Senator Robert P. Casey Jr.
Fidelity Deposit & Discount Bank
First National Community Bancorp, Inc.
Marise and Angelo Garofalo
Geisinger-Community Medical Center
David and Ann Hawk, Gertrude Hawk Chocolates
Health Sciences Library Consortium
Highland Associates, LTD
Highmark Blue Cross Blue Shield
JB Jewelers, Joby Baldassari
Lackawanna County Medical Society Alliance
Lehigh Valley Hospital - Hazleton
Nancy Lee Mack
Milrice Foundation
Joanne Aronsohn Monahan
Gino Mori, MD
Ann Moskovitz
Mount Airy Casino Resort

Investor Society

Barbetti & Company, Donna and Michael Barbetti
Leslie and Harmar D. Brereton, MD
Comcast Corporation
ComSpec International Inc.
Delta Medix, P.C.
Ann and Michael M. Ferraro, MD
Fidelity Charitable Gift Fund
The Frieder Foundation
John H. and Patricia Graham
Independence Blue Cross
Patti and George Lynett
Rev. Dr. Lois B. Martin and Thomas J. Martin, MD

MCR Productions
Thomas D. Meade, MD
Medical Staff of Lehigh Valley Health Network
Mohegan Sun Pocono
Taryn and Eric Blomain, MD and Family
NRG Controls North, Inc.
Pocono Health Care System
Kelly and Steven J. Scheinman, MD
WBREWYOU

TCMC Blue Society

Ayotunde Adeagbo, PhD
Drs. James and Karen Arscott
Blue Cross of Northeastern PA
Bold Gold Media Group
Terese and Senator Robert P. Casey Jr.
Fidelity Deposit & Discount Bank
First National Community Bancorp, Inc.
Marise and Angelo Garofalo
Geisinger-Community Medical Center
David and Ann Hawk, Gertrude Hawk Chocolates
Health Sciences Library Consortium
Highland Associates, LTD
Highmark Blue Cross Blue Shield
JB Jewelers, Joby Baldassari
Lackawanna County Medical Society Alliance
Lehigh Valley Hospital - Hazleton
Nancy Lee Mack
Milrice Foundation
Joanne Aronsohn Monahan
Gino Mori, MD
Ann Moskovitz
Mount Airy Casino Resort

2008 Society

402 N. Washington LLC
AllOne Foundation
American Janitor and Paper Supply
Anonymous
Arthur Russo Construction
Pat and John Atkins
Tracy and Joseph P. Bannon, MD
Mr. and Mrs. Peter Q. Bohlin
Dr. and Mrs. Paul Borick
Borland & Borland, LLP
Brucelli Advertising Company, Inc.
Diana Callender, MBBS, DM and Kalman Winston, PhD
Matthew A. Casey, Esq.
Ida Castro, Esq.
Carmine J. Cerra, MD
Dr. and Mrs. Joseph G. Cesare
Sanjay S. Chandragiri, MD

Andrea and Larry Mulrine
NEPA Nephrology Associates PC
Peoples Security Bank & Trust Company
PPL Corporation
Regional Hospital of Scranton-Department of Surgery
Sandra Reidel, MD
S. R. Wojdak & Associates, LP
Marguerite Salam-Host, MD and William Host, MD
Sarno and Son
Mr. and Mrs. Brian Scandle
Elsie Schweitzer
Janet Townsend, MD and Henry Geisinger
UGI Utilities, Inc.
Universal Printing Company LLC
The Wright Center for Graduate Medical Education

2008 Society

402 N. Washington LLC
AllOne Foundation
American Janitor and Paper Supply
Anonymous
Arthur Russo Construction
Pat and John Atkins
Tracy and Joseph P. Bannon, MD
Mr. and Mrs. Peter Q. Bohlin
Dr. and Mrs. Paul Borick
Borland & Borland, LLP
Brucelli Advertising Company, Inc.
Diana Callender, MBBS, DM and Kalman Winston, PhD
Matthew A. Casey, Esq.
Ida Castro, Esq.
Carmine J. Cerra, MD
Dr. and Mrs. Joseph G. Cesare
Sanjay S. Chandragiri, MD

2008 Society

402 N. Washington LLC
AllOne Foundation
American Janitor and Paper Supply
Anonymous
Arthur Russo Construction
Pat and John Atkins
Tracy and Joseph P. Bannon, MD
Mr. and Mrs. Peter Q. Bohlin
Dr. and Mrs. Paul Borick
Borland & Borland, LLP
Brucelli Advertising Company, Inc.
Diana Callender, MBBS, DM and Kalman Winston, PhD
Matthew A. Casey, Esq.
Ida Castro, Esq.
Carmine J. Cerra, MD
Dr. and Mrs. Joseph G. Cesare
Sanjay S. Chandragiri, MD

Diane M. Ciaglia, DO
Cognetti and Conaboy Family Practice
Peter A. Cognetti, MD
Patrick D. Conaboy, MD
Continuum Health Alliance, LLC
Cornell Iron Works, Inc.
Dr. and Mrs. Douglas S. Coslett
Judith and Charles Curtin, MD
Grace and F. Dennis Dawgert, MD
Jeanette DeLeo
Salvatore W. Diaz
Marion and Jeremiah Eagen, MD
John H. Ellis IV, MD
Dirk Elston, MD
Erwine Home Health and Hospice Inc.
Eye Care Specialists
Donald Farley
First National Bank of PA
First National Community Bancorp, Inc.
Friedman Electric
Frontier Communications
G. R. Noto Electrical Construction, Inc.
Dr. Roger and Nicole Roger
Golden Business Machines, Inc.
Kathleen Graff
Jeffrey Holt, MD
Honkus-Zollinger Foundation
Martin Hyzinski, MD
William F. Iobst, MD
Iron-Tree Data Networks, Inc.
Irving & Edythe Grossman Foundation
J.A. Foundation
Cynthia Jose, MD
Mr. and Mrs. Clayton J. Karambelas
Kiwans Club of Scranton
Knowles Insurance
Saul and Sharon Levy
Long, Nyquist & Associates

2008 Society

402 N. Washington LLC
AllOne Foundation
American Janitor and Paper Supply
Anonymous
Arthur Russo Construction
Pat and John Atkins
Tracy and Joseph P. Bannon, MD
Mr. and Mrs. Peter Q. Bohlin
Dr. and Mrs. Paul Borick
Borland & Borland, LLP
Brucelli Advertising Company, Inc.
Diana Callender, MBBS, DM and Kalman Winston, PhD
Matthew A. Casey, Esq.
Ida Castro, Esq.
Carmine J. Cerra, MD
Dr. and Mrs. Joseph G. Cesare
Sanjay S. Chandragiri, MD

2008 Society

402 N. Washington LLC
AllOne Foundation
American Janitor and Paper Supply
Anonymous
Arthur Russo Construction
Pat and John Atkins
Tracy and Joseph P. Bannon, MD
Mr. and Mrs. Peter Q. Bohlin
Dr. and Mrs. Paul Borick
Borland & Borland, LLP
Brucelli Advertising Company, Inc.
Diana Callender, MBBS, DM and Kalman Winston, PhD
Matthew A. Casey, Esq.
Ida Castro, Esq.
Carmine J. Cerra, MD
Dr. and Mrs. Joseph G. Cesare
Sanjay S. Chandragiri, MD

William and Mary Jean Lynett
Mackarey & Mackarey Physical Therapy Consultants
Dr. and Mrs. Paul J. Mackarey
McCarthy Tire Service Company Inc.
William McLaughlin, DO
Medical Oncology Associates
Metz & Associates, Ltd.
Dr. and Mrs. Barry A. Minora
Mohegan Sun Arena
Marie and John Mohila
Julia M. Mullen
NEPA Imaging Center
Lori and Frank W. Nocito, Esq.
Ann Noon
Lois Margaret Nora, MD
Catherine O'Donnell, Esq. and Neil O'Donnell, Esq.
Oppenheim Foundation
Jane E. Oppenheim
Neela and Satish D. Patel, MD
Mr. and Mrs. Roy Pauli
PNC Bank
Postler & Jaeckle Corp.
Prime Electric, Inc.
John E. Prior, DO and Paula Roe Prior
Dr. and Mrs. Edward Prokop
Quest Diagnostics
Radiological Consultants, Inc.
Ries Glass
RK Furs
Dr. and Mrs. Eugene Roe
Rosenberg Charitable Foundation, Mr. and Mrs. Paul J. Rosenberg
Rosenn Jenkins & Greenwald LLP
James and Gloria Ross, Ross Family Foundation
Sanofi Pasteur
Mr. and Mrs. Mark Sarno & Family

2008 Society

402 N. Washington LLC
AllOne Foundation
American Janitor and Paper Supply
Anonymous
Arthur Russo Construction
Pat and John Atkins
Tracy and Joseph P. Bannon, MD
Mr. and Mrs. Peter Q. Bohlin
Dr. and Mrs. Paul Borick
Borland & Borland, LLP
Brucelli Advertising Company, Inc.
Diana Callender, MBBS, DM and Kalman Winston, PhD
Matthew A. Casey, Esq.
Ida Castro, Esq.
Carmine J. Cerra, MD
Dr. and Mrs. Joseph G. Cesare
Sanjay S. Chandragiri, MD

2008 Society

402 N. Washington LLC
AllOne Foundation
American Janitor and Paper Supply
Anonymous
Arthur Russo Construction
Pat and John Atkins
Tracy and Joseph P. Bannon, MD
Mr. and Mrs. Peter Q. Bohlin
Dr. and Mrs. Paul Borick
Borland & Borland, LLP
Brucelli Advertising Company, Inc.
Diana Callender, MBBS, DM and Kalman Winston, PhD
Matthew A. Casey, Esq.
Ida Castro, Esq.
Carmine J. Cerra, MD
Dr. and Mrs. Joseph G. Cesare
Sanjay S. Chandragiri, MD



GIVING SOCIETIES

Transformation Society \$25,000 and over
Innovation Society \$10,000–24,999
Investor Society \$5,000–\$9,999
TCMC Blue Society \$2,500–4,999
2008 Society \$1,000–2,499
Friends of TCMC \$1–999

Sean Byrne Construction
Stone Office, Incorporated
John L. Szarek, PhD & Laura Martin
Stephanie and Gregory Threatte, MD
TMG Health
Traditional Home Health and Hospice
Joyce and David Tressler
Marge and Murray Ufberg, Esq.
UGI Energy Services
Wayne Memorial Health System
Kay Z. White
Therese L. Wright
Zap Solutions

Robert E. Altier
Nora Alu
Amendolario
American Asphalt Paving Co.
Anjani Amladi, MD '15
Cassandra Andreychik, MD '15
Andy Gavin's Eatery & Pub
Anonymous
Anthony's Italian Restaurant
William J. Antognoli, MD
William Anzalone Jr.
John F. Ardizoni
Harlene Arenberg, MS, LPC
Dr. and Mrs. Thomas A. Artabane
The Artisan's Image
AseraCare
Wafa & Hani Atamna, PhD
AuRants
Dr. and Mrs. William Auriemma
Avanti Cigar Co.
Gayle and David Averill, PhD
Relindis Awah, MD '15
Mark Ayzenberg, MD '13
JoAnn Babish
David and Margaret Baker
Kevin Baker, MD '14
John Baldoni

Robert Ballot and Cassandra Devine
Dr. Michael and Theresa Banas
Banko Beverage
Mary Joan and Charles J. Bannon, MD
Barley Snyder LLP
Barrett Law, LLC
Joe and Karen Barrett
Paul and Lisa Bartoletti
Sarah Bashaw, MD '15
Sharon Bednarz
Karen and Michael Bedrin
Alexandra A. Belcher-Obejero-Paz, MD '15
Willard Bellows
Mr. and Mrs. William Bender
Dan Benyo, MD '14
John and Linda Berardi-Demo, EdD
Matthew A. Berger, MD
Richard and Susan Berkman
Jill Berlin, MD '15
Dr. and Mrs. Lee Besen
Susan M. Biancarelli, MD
Kimberly Bidwell
Alice Biernacki
Mr. and Mrs. Robert Bieszczad
Mr. and Mrs. Richard S. Bishop, Esq.
Bistro on the Avenue
Ashley Blanco, MD '15

Karen and Richard H. Blum, MD
Boardman Photography
Ed and Jennifer M. Boardman, PhD
Boehringer-Ingelheim
Ronald Bogdasarian, MD '15
Dr. and Mrs. Stanley W. Boland
Marjorie M. Boyd
Mr. and Mrs. Matt Boyd, Esq.
Brian T. Kelly & Associates
Nance and David Browdie
Dr. and Mrs. Fredric S. Brown
Lionel and Rose Bulford
Austin Burke
Judy Burke
Barbara Burkhouse
Ellen Burkhouse
RJ Burne Cadillac
Mr. and Mrs. Bob Burns
Gerald J. Butler, Esq.
Peter and Marleen Butler
Sharon Byrne
Mary Ann Cadden
Anne Marie and James F. Caggiano, MD
Robert Camacho
Hannah Canty, MD '15

Carmen's Restaurant & Wine Bar
Chris and Ken Carroll
Cartwright for Congress
CaseCon Capital Inc
Jacqueline Castanzo
Jeremy Celestine, MD '13
Central Park Flowers
Joellen Cerra
Denise S. Cesare
Mr. and Mrs. Robert Cherundolo
Cheryl Kaiser Fine Photography
Edmond and Susan Chind
Jeremy Chin, MD '13
Carol L. Chisdak
Stephen Christensen
Thomas Churilla, MD '13
Lee M. Ciccarella, MD
Karen Cimino
City Cafe
Scott Clarke, MD '15
Classic Properties
Tammy Lee Clause, Esq.
Gayle Cobb
Coccia Ford Lincoln
Nina Cohen, MD '15
Cheryl A. and Daniel Colan
Daniel Colan
Colarusso's Coal Fire Pizza
Cleve Coldwater

Mark T. Coleman
Gloria and Frank Colosimo
Comfort Suites Scranton
Condron & Cosgrove
Bridget Conlogue
William Conlon
Patrick and Eleanore Cook
Neal Cooper, MD '15
Cooper's Seafood House, Inc.
Robert Corey, MD '13
Mr. and Mrs. William M. Corey
Brittany Corrigan
Joseph and Sharmayne Cortese
Ellen and Michael M. Costello, Esq.
Patrick Coughlin, PhD
Patrick Courtright, MD '15
Charlene Crocker
Maureen Cronin
Crystal Earth Gallery
Crystal Signatures
Barbara Cunningham
Peter P. Cupple, MD
Mary Jean Curtin
Thomas and Virginia Dailey
The Daisy Collective
Kunal Kirit Dalal, MD '15
Bethany Davis
Heather Davis
Jack Davis

Christopher Decker, MD '15
Dr. and Mrs. Gary R. Decker
Dell Manufacturing
Carol and Don Dembert
Colleen Dempsey, MD '15
William J. Dempsey, MD
Nikole DeNoie
William R. Dewar III, MD
Andrea DiMattia
Michael DiMattia
Tom and Tracy Doherty
Chris Dolan
Photography
Constance Dombroski
Mr. and Mrs. Girard R. Donahoe
Dougherty, Leventhal & Price
Michael Dougherty, MD '15
Nicholas Drayer, MD '15
Dr. and Mrs. Lewis Druffner Jr.
Ron and Marie Duclos
Debra Dudley
Duffy Accessories
Michele Dunda
Erin Dunleavy
Dunmore Appliance
DxDempsey
East Stroudsburg University



DONOR REPORT *continued...*

Brian Ebersole
Eco Industrial LLC
Kathy and Richard G. Emanuelson, MD
Janice Emlaw
Mary Louise and Richard English, MD
Everhart Museum
Fahey Family Trust, Dr. and Mrs. John Fahey
Michelle and Iain Fan
Fanucci's Ristorante Italiano
Dale Farber-Brill
Jeffrey Farrell, MD '13
Jane Farr
Joyce Fasula
Devon Fawcett Bremer
David Fedor, DO
Herbert Fellerman
Dr. and Mrs. Howard Ferimer
Stephanie Ferimer, MD '13
FiberTel Inc.
Fidelity Deposit & Discount Bank
Fillmore Agency, Inc.
Rabbi and Mrs. Michael B. Fine
Moshe Fink
Alice Fino Ewonishon
Fire and Ice on Toby Creek
First Presbyterian Church
Stephen and Luanne Fisk
W. David FitzPatrick, MD
Mrs. Gordon S. Florey
Mr. and Mrs. Richard Florey

Carol Fouad, MD '15
Four Seasons Asian Bistro
Kara Fox-LaRose
Fratelli's Pizza and Pasta House
Allan Friedberg, DMD
Friends of Mike Carroll
Friends of Senator John Blake
Mr. and Mrs. William Fromel
Adam Fusick, MD '15
G. Weinberger Co.
Mr. and Mrs. James Gamberoni
Lea D. Garcia and Lt. Col. Fred N. Garcia, Ret.
G. Richard Garman and Maribeth Jones
Gelb Foundation
Andrea Gerko
Gerrity's Supermarkets
Robert Gessman, MD '13
Jacquelyn Ghormoz
Judge James A. Gibbons
Janice Gilhooly
Kurren Gill
Glenmaura National Golf Club
Rashmi Goel
Jillian Golaszewski
Good Shepherd Fund
John Gorcezyk
Jack and Helen Gorelick
Vincent and Victoria Gorski
Rosemary and P. Jason Granet, MD

Grant Thornton LLP
The Greater Scranton Chamber of Commerce
Kristen Greene
Grico's Restaurant
Sarah D. Grieco
Mr. and Mrs. William Grochowski
Francis Gruscavage
Eugene Gu, MD
Donald W. Haines, DDS
Husam F. Hamati, MD
Hampton Inn & Suites Wilkes-Barre
Hampton Inn Montage
Hand Surgery Associates LLC
Marika Handakas, PsyD
Happenings Communications Group, Inc.
Dr. and Mrs. Leo M. Hartz
Laura Heck, MD '15
Barbara Heier
Hez Studio Salon & Spa
Hilton Scranton & Conference Center
Johnathan Hludzick
Luana Hossain, MD '15
Hourigan, Kluger & Quinn
Oo Htaik, MD '13
Ingrid and Jeffrey Husisian
Stacie Hutchinson
Isabella Restaurant & Bar
Rebecca Ives, MD '15

Jack Frost National Golf Club
Alan Johnson, MD '14
Kathleen Jordan
Joyce Haggerty and Bell Insurance Group
Jennifer Joyce, MD
Julie Jordan
Photography
Manfred Junker
Jack Kalins
Ravi Kant, MD
Dawn Hall Karam
Frank Katusak
Kay's Italian Restaurant & Pizzeria
Tom Landon
Jennifer Langstengel, MD '15
Brendan Larar
Lavelle Strategy Group
Col. and Mrs. Zim Lawhon
Lee Electric Co.
Karen Leeds, MD '14
Legends Restaurant
Lenora's
Michael Leonard, MD '14
Bonnie and Samuel Lesko, MD
Leverage Fitness Studio
Alan Levy and Fay Sackstein
Lewis & Gerry Sare
Philanthropic Fund of the JFEDNEPA
Robert M. Liegner, MD
Lightspeed Technologies, Inc.
Dr. and Mrs. Kenneth W. Lilik
Jun Ling, PhD

Mr. and Mrs. James Kovaleski
Brian E. Krause
Krayter Detective Agency
Dr. John Kuna
Mr. and Mrs. Matthew Kunchick
Lackawanna County Commissioners
Lackawanna Heritage Valley
Sharon Lynett
M & T Bank
M & T Charitable Foundation
Darren P. Macioce
Ann M. Mackrell
Mahoning Valley Orthopedics
Igor Makhlin, MD '15
Theodore and Marie Malinchak
Mr. and Mrs. John J. Malloy
Mr. and Mrs. Richard K. Mangan
Hendrik Marais, MD '15
Joseph Marchese, MD '13
Market Street Bar & Grill
Mike Markovitz
Marquis Art & Frame
Martz Trailways
Laura Mayeski
Mary Theresa Mazur
Dominic L. Mazza, MD
Joshua McCambridge, MD '14
William C. McCauley, MD
Peter McCorkell, MD '13

Patricia A. McCormack, MD
Elizabeth McGill
Ellen McGuire
Amanda McIver
James McKane
Robert and Ann McKenna
William A. McLaughlin, PhD
Suzanne McNamara
Betsy Mead
Charles Mecca
John J. Menapace
Meridian Leasing Corporation
Michael and Denise Mesaros
Mesko Glass & Mirror
MetLife Foundation
Metz Culinary Management
Matthew Meyers, MD '14
James Mezick
John W. Mihalchik
Kathy and Joseph Mihok
Carol F. Miller
Milliman Consulting
Minooka Pastry Shop
Minooka Subaru
Edith and Delmar Mitchell
Kevin Mitchell Jr.
Montage Mountain
Mark Moran
Tanya Morgan
Dr. and Mrs. Mordekhai Moritz
Brennan Mosch, MD '13
Moscow Clayworks

John P. Moses, Esq.
MotorWorld Automotive Group, Inc.
Joanne Muellenbach
Rajan Mulloth, MD
Marion Munley, Esq.
Murray Securus
G. Kevin Musto, MD '14
Nada & Co.
Albert and Mary Nalevanko
Natale's Restaurant & Catering
NBT Bank
Gerard Nealon, MD
Lucinda Neubert
Joan F. Newman
Alysha Nicholls
Lynn H. Nichols
Nick and Maggie Niles
North Pocono Family Eyecare, LLC
Northeast Dermatopathology Institute LLC
Northeast Regional Cancer Institute
Northeastern Pennsylvania Philharmonic
Northwestern Mutual
Homa and Ali A. Nourian, MD
NOW Hair Studio, Erica Garofalo
Thomas Nowakowski, MD '13
Northeast Radiation Oncology Center
Judith B. O'Brien
Laurie and Christopher T. Olivia, MD
One Source Realty, Inc.
Shelly and Daniel Onorato
Regina Osif
Over the Moon
PA Advocates Inc.
Karen Paczkowski, MD
Kimberly Padden
Palazzo 53
Eileen Palmer
Dipti S. Pancholy, MD and Samir B. Pancholy, MD
Stephen Pancoast, MD

Phillip Pappas
Manraj Parmar, MD '13
Adam Pascoe, MD '13
Pathology Associates of NEPA, Ltd.
Paupack Hills Golf & Country Club
Pawsitively Perfect Pet Salon
Pediatric Dental Specialists, LLC
Idanna Peeler
Antonio Pellegrino
Marlene Pell
Alex D. Perez, MD
The Perry Law Firm, LLC
Personna Photography
Sajleen Phagura, MBS '12
Shannon Pickup, MD '15
Arline and Robert Piehl
Mr. and Mrs. Eugene L. Pierson
Brenda Piskin and Andrew DiFiore
Piso and Associates LLC
Pizza by Pappas
Sonia L. Planey, PhD
Joseph Politch, PhD
POSH and The Colonnade
Jessica Potter, MD '13
Kenneth Potter, MD '13
Kathryn Powell
Jessica Pozzuto, MD '15
Amy Pratt
Dr. Donald L. and Sally Preate Sr.
Joseph Preate
Russell P. Preno
Wayne L. Weston, MD
Timothy B. and Susan E. Primerano
Prudential Asset Management Co.
Nicole Pumariega, MD '15
Pump House Bed & Breakfast
Ghazal Quinn, MD '15
Marc H. Rabin, MD
Radiological Consultants, Inc.
Michael J. Raymond

The Redhead Companies
Willard Reuther
Revello's Cafe-Pizza
Mary B. Rhodes
Rich Mahonski Goldsmith
Anne and John T. Rich, MD
Steven E. Rinehouse, MD
Dean J. Ripley
Robert Rossi & Co.
Lee and Warren Robinson Jr., MD
Joanie and Chris Roe
Margaret and John Rogers, MD
Gene Romaldini
Mary Roman
Roma's Pizza & Italian Restaurant
Mark and Karen Roper
Sara Roper, MD '13
Mr. and Mrs. Warren Ross
Mr. and Mrs. Guy Rothery
Rustic Kitchen
Ruth's Chris Steak House
George Salama, MD '15
Michael Salamon
Lee Saltzgaber, MD
Sambuca Italian Grille & Bar
Linda Sanders, MD '13
Melissa Sanko
Sanofi Pasteur
Cham Sante, MD '15
Sapphire Salon & Destination Spa
Mr. and Mrs. Ed Sartin
Joseph Schectman, DPM
Stephen Schleicher, MD
Christopher Schmoyer, MD '15
Michelle Schmude, EdD
Roger Schwartz
Scranton/Wilkes-Barre RailRiders
Azra M. Sehic, MD
Marilyn P. Serafini
Nicholas J. Serniak III '15

Blake Shaffer, MD '15
Mr. and Mrs. Robert P. Sheils III
Drs. Douglas and Margaret Sheldon
Pam and Keith Shenberger, MD
Shubhra M. Shetty, MD and Ajay Shetty, MD
Jean Shields
Shine Salon
The Shirt Lady
Javad Sholehvar, MD
Sibio's
Richard R. Silbert, MD
Simon & Co. Jewelers
Olapaju Simoyan, MD
Dan Simrell Advertising
Jenny Sirak
Skylake Gallery, Bill Chickillo
Rebecca Slangan
Gail and Alessandro Smeraldi, MD
Mark Smerdon
Mary Beth Sokach, DO
Carlene Spitzer, PA-C
Sharon and Daniel Sporn, MD
Deborah Spring, MD
Mark Stahler
Marvin Staiman
Starr Uniform Center, Inc.
Jon K. Sternburg, MD

Phil and Jane Stevens
Karen A. Stine
David J. Strang, MD
Jenna Strzelecki
Kristen Suchniak, MD '13
Ryan Sugarman, MD '13
Susquehanna Brewing Co. LLC
Jill Swersie
Sylvester Chevrolet
Robert J. Sylvester
Jill Taggart
The Tambur Family Foundation
TCMC Class of 2014
Timothy R. Barnhart
Maxwell Tolan, MD '15
Tom James Company
Tom Wolf for Governor
Lawrence S. Tomack, MD
John and Jane Tomaszewski
Amy Townsend
Erica Townsend
Toyota of Scranton
Ozan Toy, MD '15
Mary and Gerald P. Tracy, MD
Dr. Robert Trautwein, MD
Mary Lawhon Triano
Shreya Trivedi, MD '15
April Troy, MD
Truly Scrumptious LLC

Edison Tsui, MD '15
Thomas P. Tulaney
United Way of Lackawanna and Wayne Counties
Allyson Urie
V. Loshakov MD & Associates
Valor Credit Union
Mr. and Mrs. Joseph A. Varaly
Varsity, Inc.
The Vault Tap & Kitchen
David J. Verespy, MBS '13
Leo Vergnetti
Carol Jones Verrone
Vincenzo's Pizzeria
Vintner's Circle
Emily Vistica, MD '15
Theresa Waibel
Mr. and Mrs. Martin J. Waldenberger
Dr. Albert and B. Joan Waldman
David and Vera Wallline
Charles Wallinger
Nan O'Donnell Wandolowski
Waste Management of Pennsylvania, Inc.
Samantha Watkins
Wayne Bank
Mr. and Mrs. Ronald Webb
Westmoreland Club

Mark V. White, MD & Leah Lind
Wilcox and McCormick P.C.
Brian D. Wilcox, MD and Cathy Wilcox, PhD
Wilkes-Barre/Scranton Penguins
Wilkes University
Carien Williams, JD
Ryan Wilson, MD '13
Francine Wolk
The Woodlands Inn
Woodloch Pines, Inc.
Paul Woods
Jennifer Wu, MD '15
Lisa Wydawski Smith
Yiran Xu, MD '15
Midori Yamanouchi, PhD
Bonnie Jo and Michael A. Yoder, MD
Barry S. Yoss, MD
Mr. and Mrs. Norman Dusty Young
Randy and Lisa Young
Joan Yusinski
Stephen Zangardi
Douglas Zaruta, MD '15
Robert P. Zelno
Mr. and Mrs. William Ziegler
Danielle Ziehl, MD '15
Kristina Zimmerman, MD '15
Edward G. Zurad, MD

